

IDEAL 0201 OMD

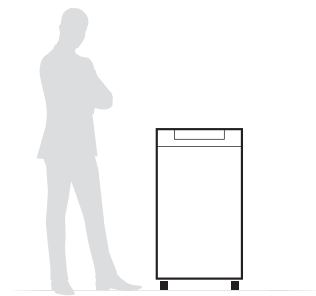
Innovative high performance shredder for optical media, especially designed for efficient destruction of CDs and DVDs.

| | |
|------------------|------------------------------|
| Level 0-5 | 2.2 x 4 mm particle cut |
| Capacity: | approx. 2500 pieces per hour |



Technical specifications

| | |
|-----------------------|------------------------|
| Volume | 100 litres (shred bin) |
| Power | 230 V / 50 Hz |
| Motor capacity | 1600-Watt-Motor |



| | |
|---------------------------|---------------------------------|
| Dimensions | 1020 x 548 x 590 mm (H x W x D) |
| Weight | 104 kg |
| ID-No. | 11400501 |
| GS certificate-No. | DP 10037 |

Product characteristics

High-quality cutting head with 2.2 x 4 mm particle size for high security needs according to German BSI - TL 03420 and North American NSA/CSS 04-02 requirements (particle size $\leq 10 \text{ mm}^2$), which corresponds to security level 0-5 of the DIN 66399 standard. Impressive shred speed guarantees high shred performance of up to 2,500 CDs or DVDs per hour (one by one feeding). Solid steel cutting shafts made of special hardened steel. Suitable for all types of CDs and DVDs. SPS – (Safety Protection System) package: electronically controlled safety flap in the feed opening with specially designed feed slot to accept optical media and to prevent “fly back”; automatic reverse and power cut-off (to prevent jams); automatic stop if the collection bin is full; electronic door protection via a magnetic proximity switch; double motor protection; energy saving mode. Multifunction control element EASY-SWITCH with integrated optical indicators for the operational status of the shredder. Automatic start and stop via a photo cell. ECC – Electronic Capacity Control: indication of the used shred capacity during shredding process. Automatic oil injection on the cutting shafts during shredding operation for constantly high shred performance. Powerful 1600 Watt motor for continuous operation. Sturdy chain drive and fully closed gear box housing. High-quality wooden cabinet, mobile on castors. Antistatic collection bin (100 litres volume) made of an impact-resistant plastic material. Attractive colour combination: silver / dark grey. One year guarantee on all parts. Quality “Made in Germany”.

IDEAL

IDEAL 0201 OMD

Features



ECC – ELECTRONIC CAPACITY CONTROL

For continuous feeding without creating jams the used capacity is indicated by LEDs during the shredding process.



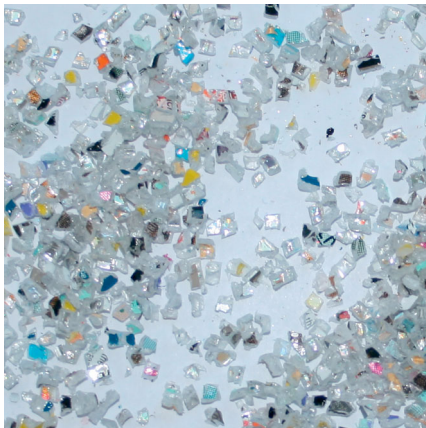
SAFETY FLAP WITH FEED SLOT

A high safety standard is guaranteed by the electronically secured safety flap with feed slot for the CDs/DVDs (one by one feeding). The flap is part of SPS safety package.



ELECTRONIC OIL INJECTION

The automatic oil injection system lubricates the cutting shafts when shredding and guarantees a constantly high shred performance.



PARTICLE SIZE 2.2 X 4 MM

Each CD or DVD is turned into approx. 1,200 small particles of 2.2 x 4 mm in size. The picture shows the original particle dimensions.



IDEAL

certificate
no. **DP 10037**
dated 25.09.2012

GS Test Certificate

Name and address of the holder of the certificate: (customer): Krug & Priester GmbH & Co. KG
Simon-Schweitzer-Straße 34
72336 Balingen

Name and address of the Manufacturer: see above

Product designation: Paper Shredder

Type: 11400501, 11400502, 11514101

Testing based on: DIN EN 60950-1:2011-01+A12:2011-08
EN 60950-1:2006-04+A11:2009-03+A1:2010-03+A12:2011-02
IEC 60950-1:2005-12+AMD1:2009-12
Information technology equipment – Safety;
Part 1: General requirements
EN 12100-2:2004 Safety of machinery – Basic concepts, general principles for design; Part 2: Technical principles EN ISO 13857:2008
Safety of machinery – Safety distances to prevent hazard zones being reached by upper and lower limbs

Remarks: This GS Test Certificate replaces the GS Test Certificate DP 10037 dated 22.03.2010.

The type tested meets the requirements specified in article 21 para. 1 of the German Product Safety Act. The holder of the certificate is entitled to affix the GS mark shown overleaf to the products complying with the type tested. At that, the holder of the certificate shall observe the conditions specified overleaf.

The present certificate including the right to affix the GS mark is valid until: **21.03.2015**

Further provisions concerning the validity, the extension of the validity and other conditions are laid down in the Rules of Procedure for Testing and Certification of August 2012.



Signature (Dipl.-Ing. Vogl)

Postal address: Postfach • D-65173 Wiesbaden • Office: Rheinstr. 6-8 • D-65185 Wiesbaden
Phone: +49 (0) 611/131-8219 • E-Mail: pruefstelle-dp@bgetem.de
612.17-So/Ho • Test report: A 09194 • Produktschlüsselnummer: 001.1001